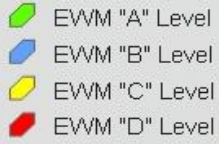


Houghton Lake Treatment Maps June-July 2020

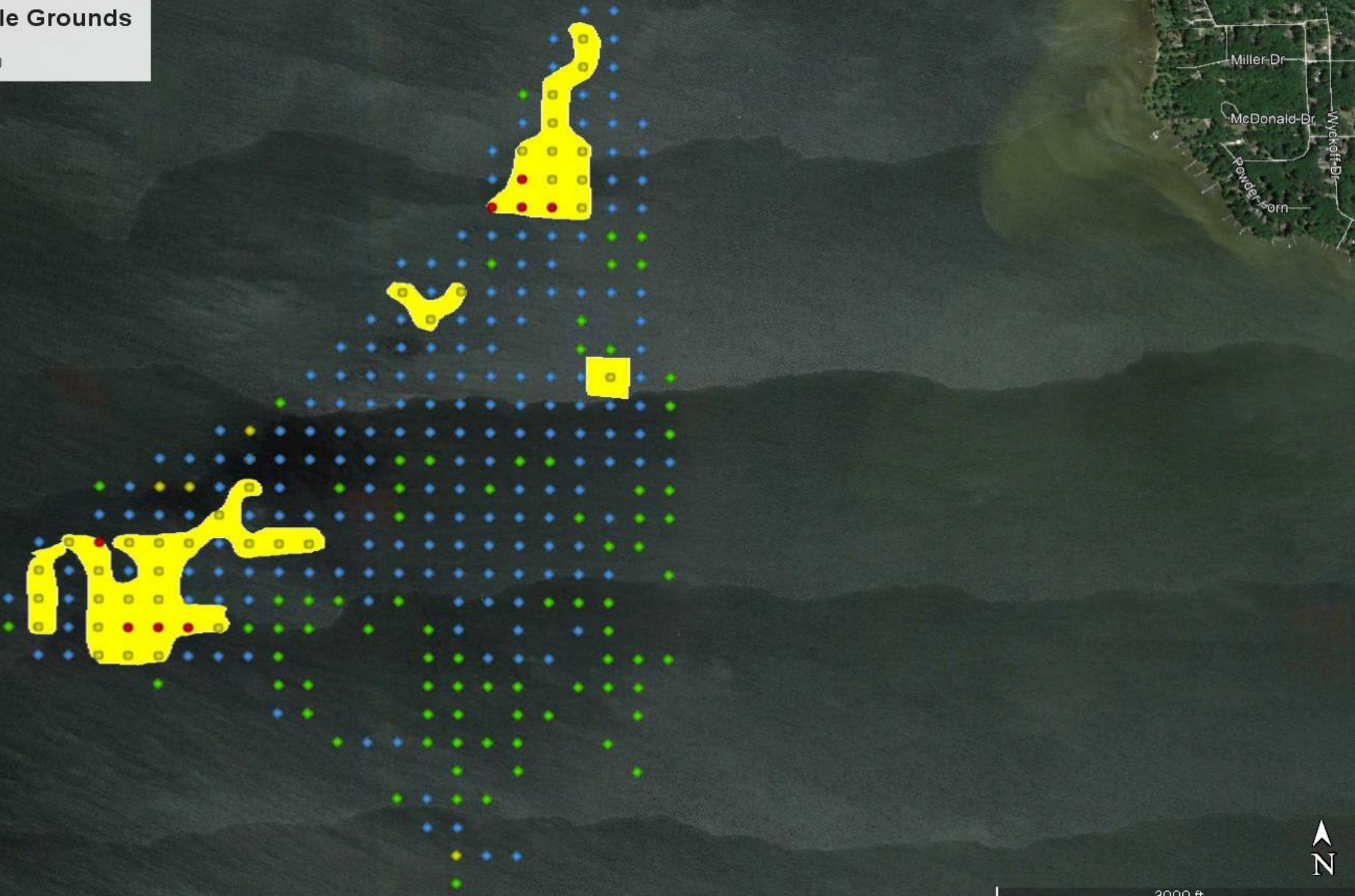
Houghton Lake: Middle Grounds

Roscommon County, MI
Eurasian Watermilfoil Map 9 June 2020

- Legend**
- EWM "A" Level
 - EWM "B" Level
 - EWM "C" Level
 - EWM "D" Level



Houghton Lake

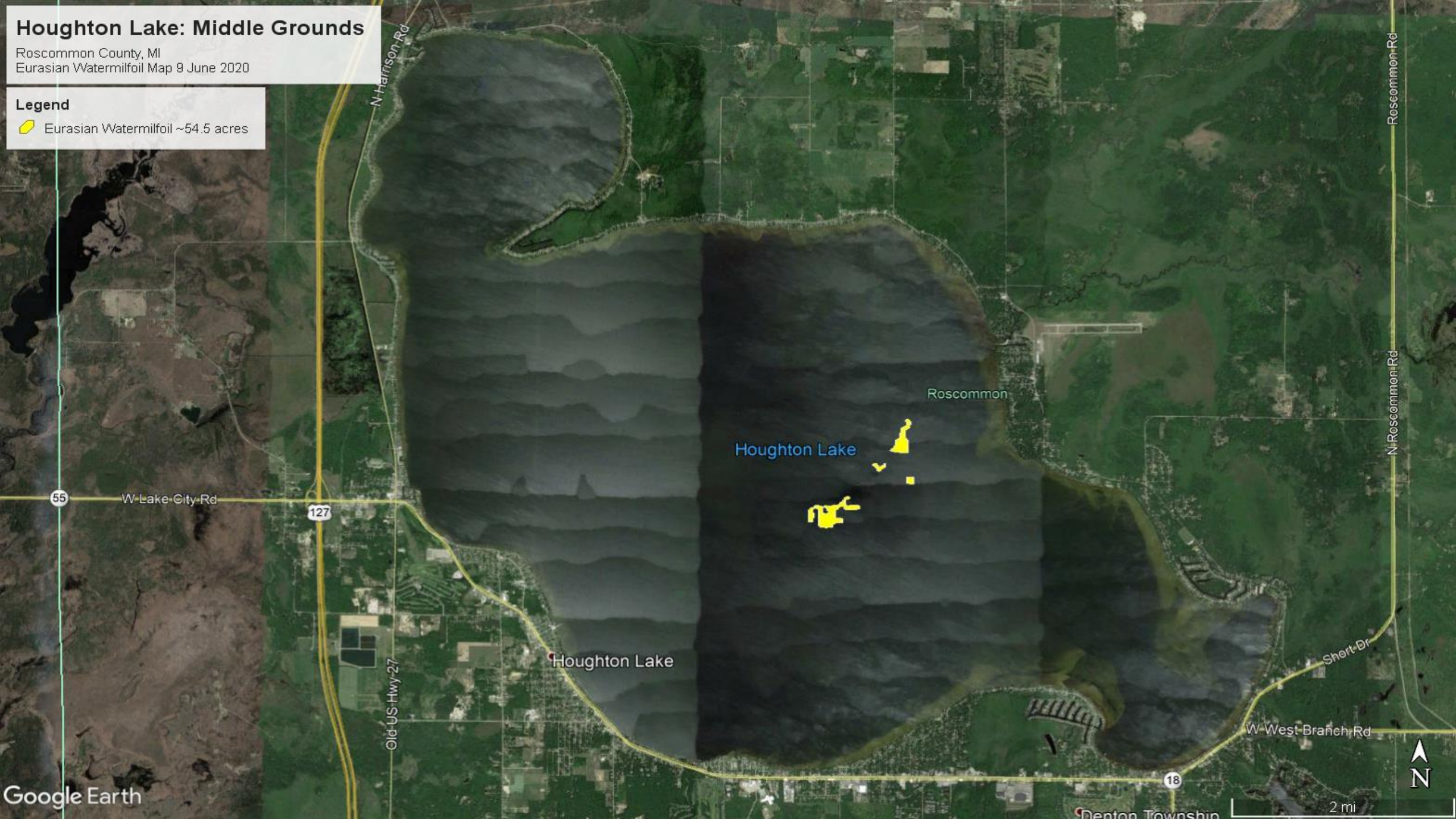


3000 ft

Houghton Lake: Middle Grounds

Roscommon County, MI
Eurasian Watermilfoil Map 9 June 2020




Legend
Eurasian Watermilfoil ~54.5 acres



Houghton Lake

Eastern Long Point EWM Areas

Legend



-  DNR East Access
-  Eurasian Water Milfoil Area ~2.5 acres
-  GPS Point

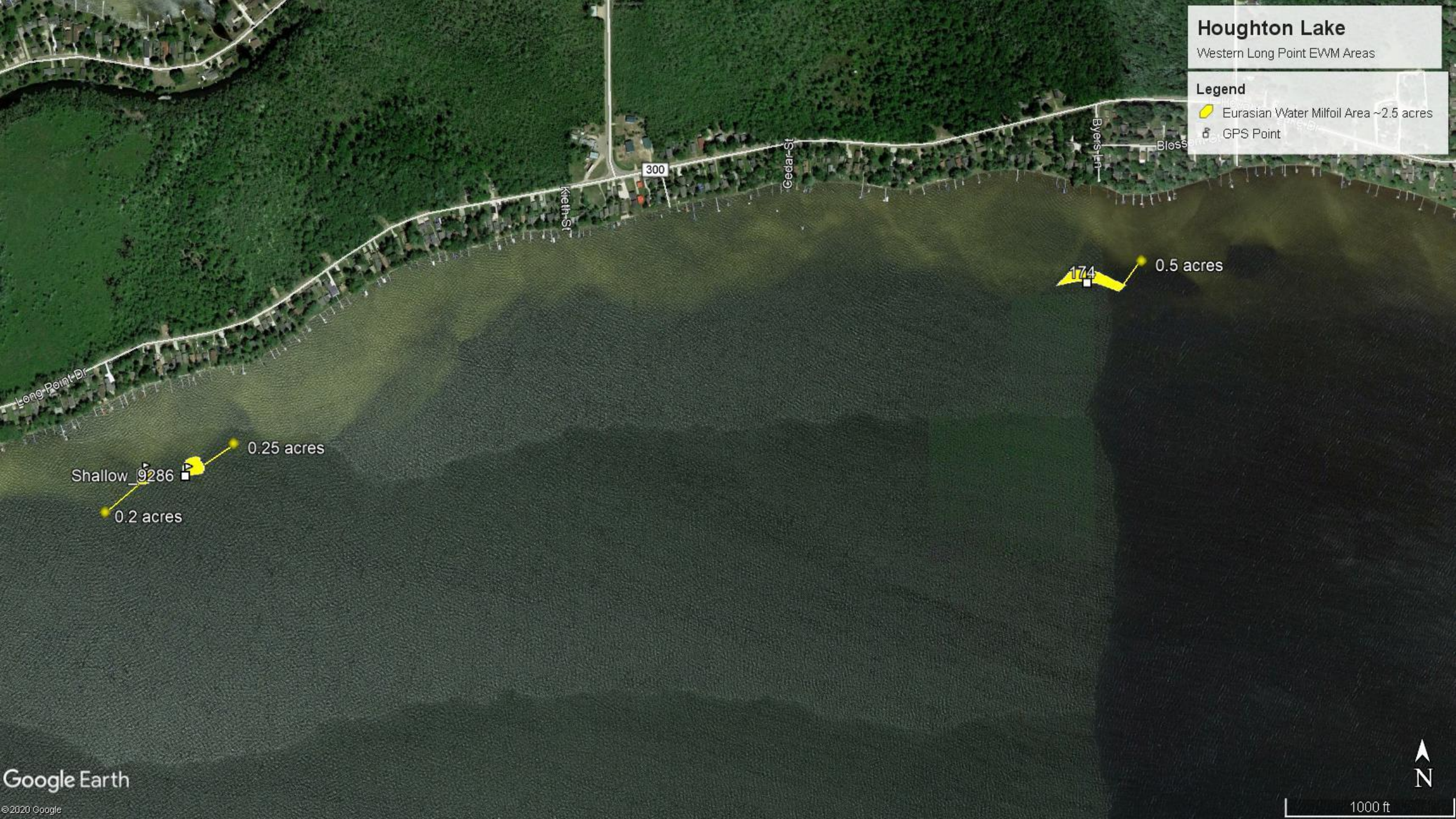


Houghton Lake

Western Long Point EWM Areas

Legend

-  Eurasian Water Milfoil Area ~2.5 acres
-  GPS Point



Shallow_9286

0.2 acres

0.25 acres

174




0.5 acres



Houghton Lake

North East Lake EWM Areas

Legend

-  DNR East Access
-  Eurasian Water Milfoil Area ~67 acres
-  GPS Point



Houghton Lake: Middle Grounds

Roscommon County, MI
Eurasian Watermilfoil Map 9 June 2020

Legend

- EWM "A" Level
- EWM "B" Level
- EWM "C" Level
- EWM "D" Level

Houghton Lake





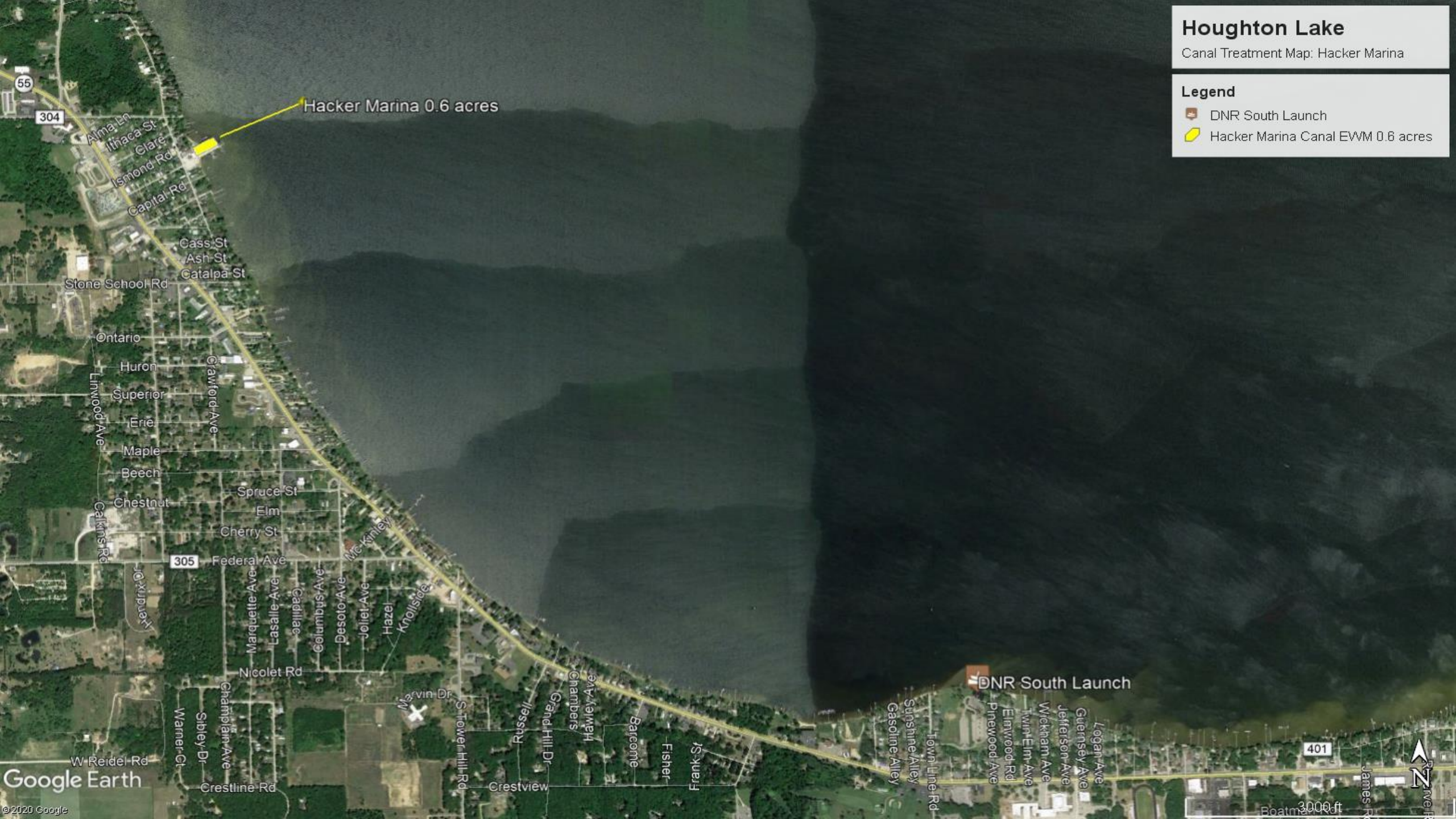
A north arrow pointing upwards and a scale bar labeled "3000 ft" are located in the bottom right corner of the map.

Houghton Lake

Canal Treatment Map: Hacker Marina

Legend

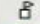

-  DNR South Launch
-  Hacker Marina Canal EWM 0.6 acres



Houghton Lake

Roscommon County
Long Point East Canal
Starry Stonewort Treatment Map

Legend





-  GPS Point
-  Starry Stonewort Area ~0.25 acres

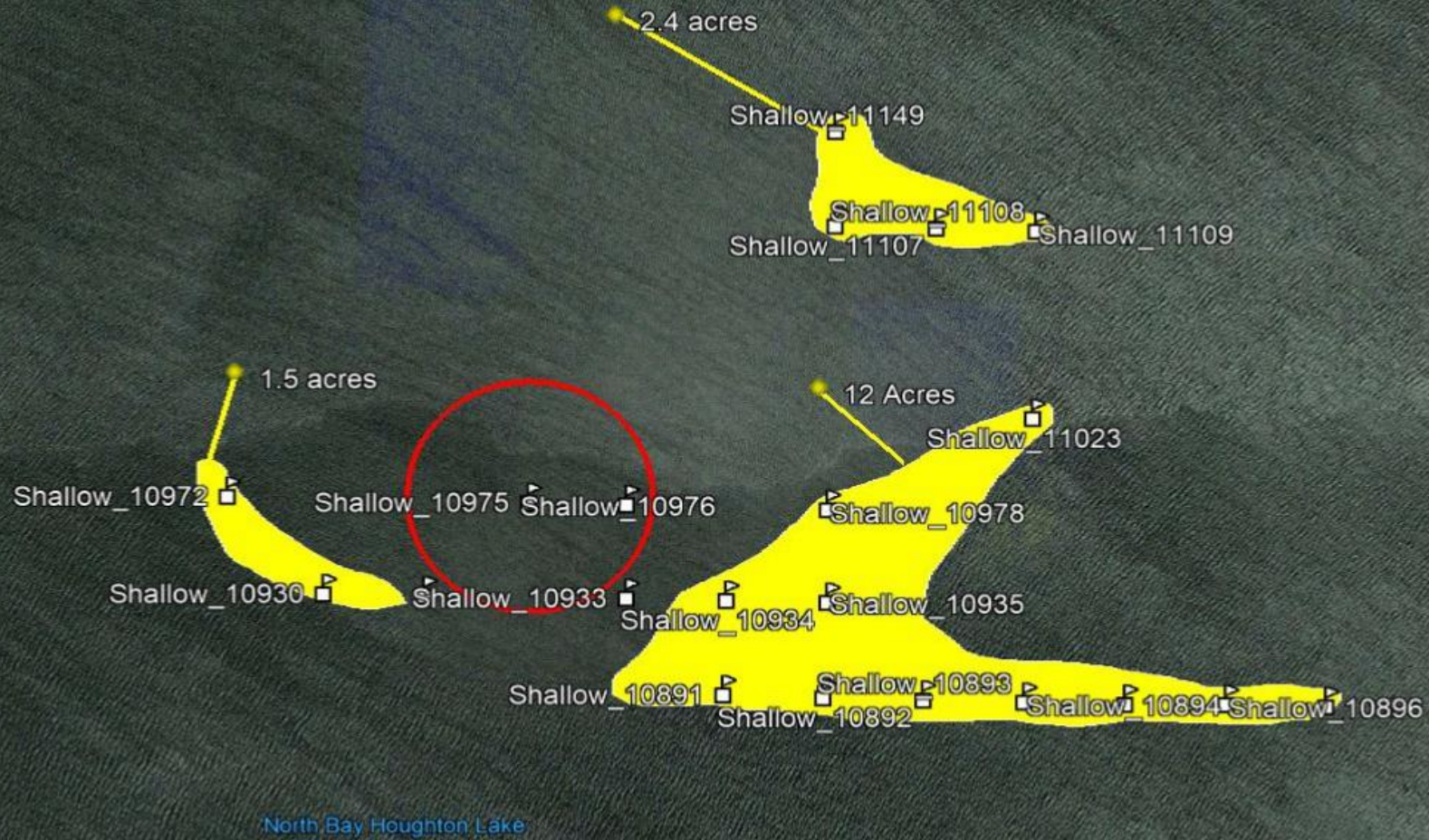


Houghton Lake

Roscommon County
North Bay
Eurasian Watermilfoil Treatment Map

Legend

-  Feature 2
-  GPS Point
-  North Bay EWM ~16 acres
-  WILD RICE!! Set Back Area



Houghton Lake

Roscommon County
Ford Canal and Porath Canal
Starry Stonewort Treatment Map

Legend

-  GPS Point
-  Starry Stonewort Area ~0.85 acres

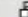



300 ft

Houghton Lake

Roscommon County
Fox Canal
Starry Stonewort Treatment Map

Legend



-  GPS Point
-  Starry Stonewort Area ~0.35 acres

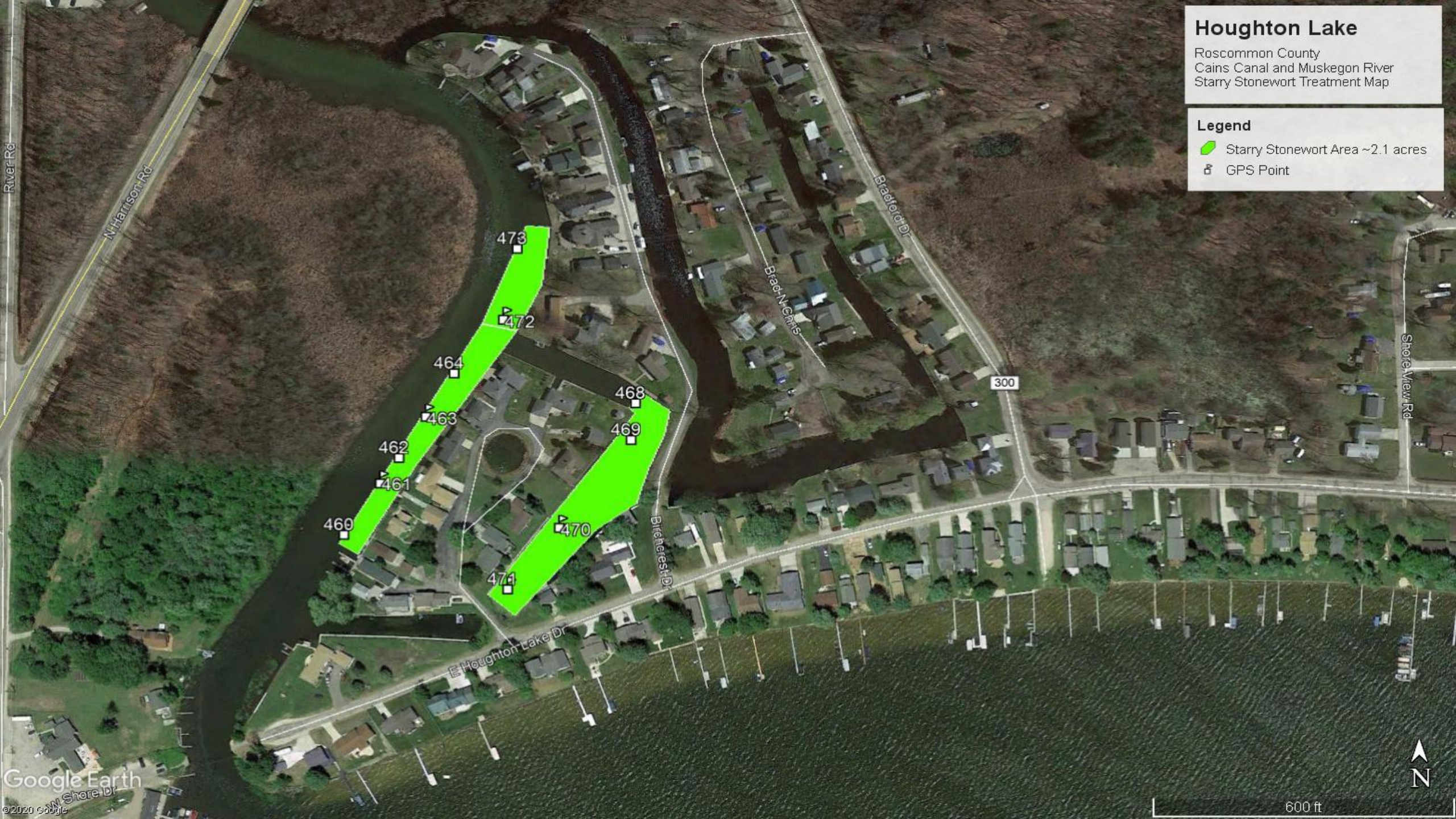


Houghton Lake

Roscommon County
Cains Canal and Muskegon River
Starry Stonewort Treatment Map

Legend

-  Starry Stonewort Area ~2.1 acres
-  GPS Point

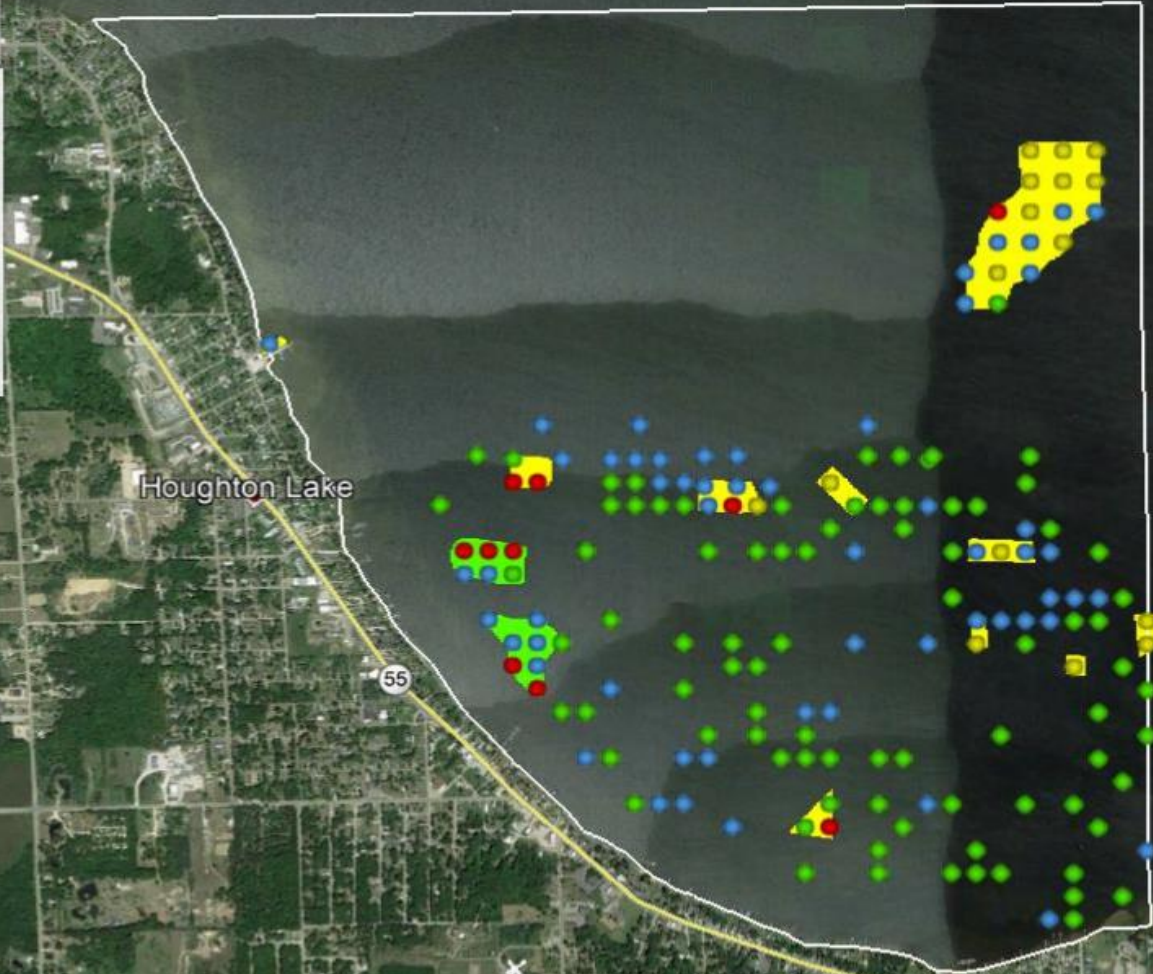


Houghton Lake

Southwest Bay
Eurasian Watermilfoil Map
10 Jun 2020

Legend

- "A" Level
- "B" Level
- "C" Level
- "D" Level
- EWM Treatment Area ~57 acres
- EWM w/ Dense CLP ~18 acres
- Southwest Bay Survey Area



"D" Level "C" Level "B" Level

